

# Sonoscape

## *E2 Expert*

A brand new portable ultrasound system E2, brings you a distinct experience with SonoScape's traditional imaging technologies.

E2's accurate B mode and sensitive color signal give crisp, detailed images to improve your scanning experience while increasing your diagnostic confidence.



# Excellent Image Quality as Always

## C-Field Beam

The continuously dynamic focus provides more energy which contributes to higher contrast resolution, signal-noise ratio and uniformity in the image.

## $\mu$ -Scan

The latest generation of  $\mu$ -Scan imaging greatly enhances the image by reducing noise, improving signal strength and improving visualization.

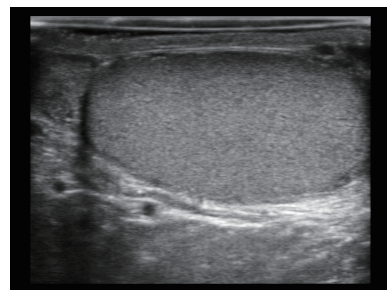
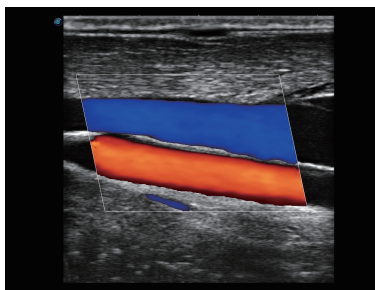
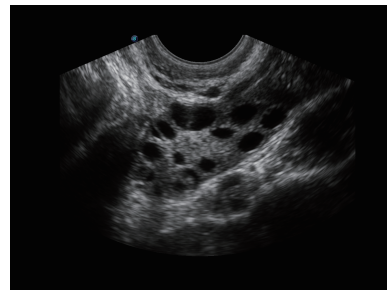
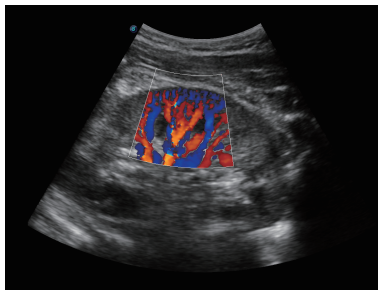
## Dynamic Color

With Dynamic Color the sonographers can easily see in detail very small veins and slower velocities for the detailed blood flow information of the patient.

## Tissue Specific Imaging

The system detects different tissues automatically by matching different acoustic ranges, from which the user can then acquire images with more uniformity and higher spatial resolution.

# Wide Range of Probes and Applications



# Sonoscape

Distributed by :

**Hitachi Medical Systems Europe Holding AG**

Sumpfstrasse 13, 6312 Steinhausen, Switzerland  
[www.hitachi-medical-systems.com](http://www.hitachi-medical-systems.com)

Sonoscape reserves the right to make changes in specifications and features shown herein, or discontinue the product described at any time without notice.  
The standard components and availability of optional items vary depending on the country

SbH2018\_E2 Expert\_Flyer\_v1.0

*For proper use of the system, be sure to read the operating manual prior to placing it into service*