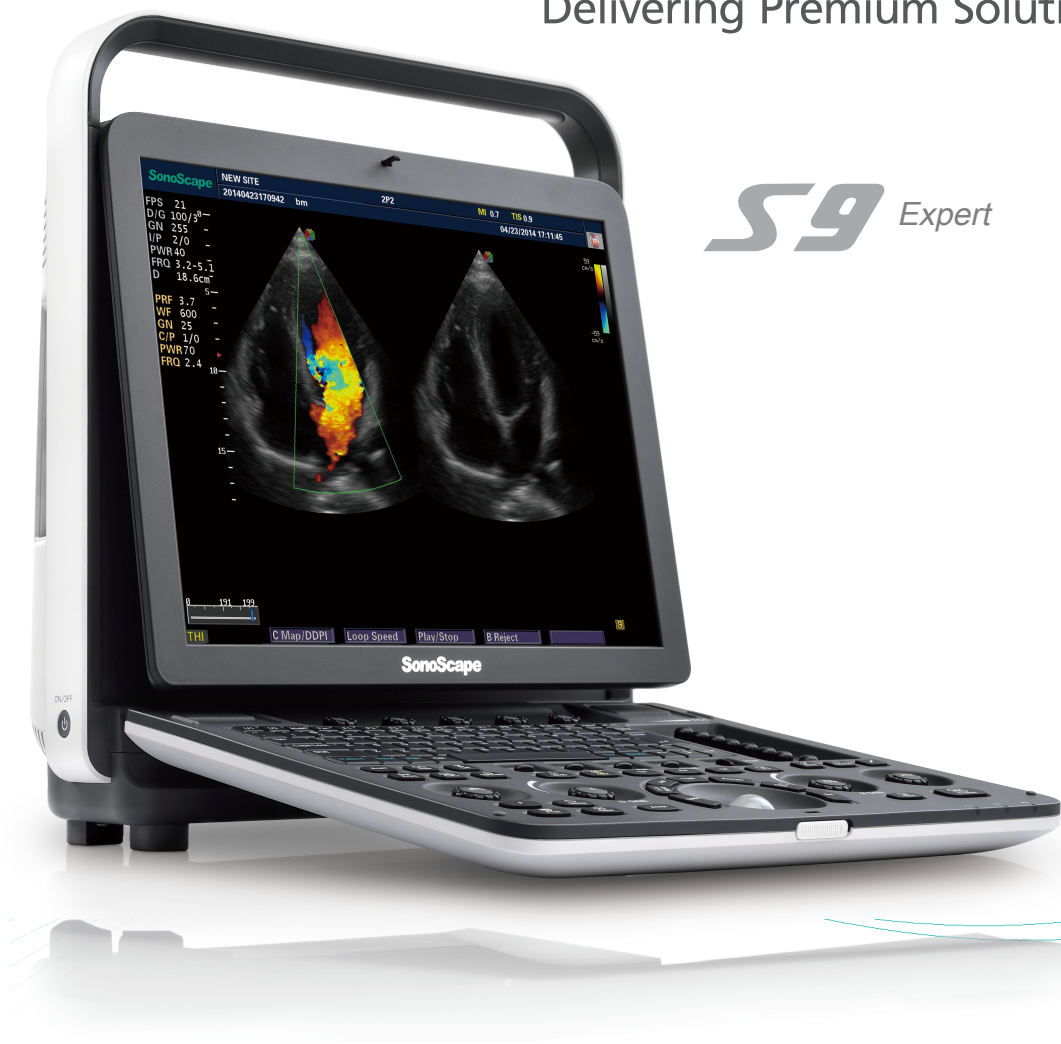


Delivering Premium Solutions

S9 Expert



SonoScape

Distributed by :
Hitachi Medical Systems Europe Holding AG
Sumpfstrasse 13, 6312 Steinhausen, Switzerland
www.hitachi-medical-systems.com

Sonoscape reserves the right to make changes in specifications and features shown herein, or discontinue the product described at any time without notice.
The standard components and availability of optional items vary depending on the country

SbH2018_S9 ExpertKeyboard _Brochure_v1.0

For proper use of the system, be sure to read the operating manual prior to placing it into service

Premium Solutions

S9 Expert is an adaptable system capable of providing exceptional diagnostic images for a variety of exam conditions and requirements. This ergonomic, lightweight, HCU system provides clinically proven technologies to improve workflow, patient care and comfort for the user.



- **Real-time 3D (4D)**

With increased physical channels and new platform, S9 Expert offers both high quality imaging and high frame rates to meet a new standard for Sonoscape's S series. Thanks to the high frame rates and advanced technologies, the 4D imaging of S9 Expert delivers smooth movement of the fetus and offers comprehensive 4D acquisition, data rendering, and post-processing functionality.

- **Spatial Compound Imaging**

Spatial Compound Imaging utilizes several lines of sight for optimal contrast resolution, speckle reduction and boarder detection, with which the S9 Expert is ideal for superficial and abdominal imaging with better clarity and improved continuity of structures.

- **Pulse Inversion Harmonic Imaging**

The harmonic signals are fully preserved without degradation of the acoustic information, which makes it possible for the S9 Expert to image high-level details and improve contrast resolution by reducing noise and clutter in the visualization of subtle lesions, small parts, vascular and so on.

- **C-Xlasto Elastography**

The S9 Expert provides a new method to support the physician in assessing tissue elasticity. C-Xlasto Elastography with Strain Ratio Measurement creates a smooth workflow and easily detects and evaluates palpable masses in breasts, thyroid and musculoskeletal structures, helping early detection of malignant diseases and providing functional information on the tissues.

- **Real-time Panoramic Imaging**

The Real-Time panoramic imaging allows for an extended field of view to be displayed. By gradually moving the probe laterally across the anatomy, a series of images are stitched together to show one continuous image which is wider than the scanning width of the probe, offering a larger reference image for documentation of spatial relationship of structures.

- **Stress Echo**

Stress echo is the combination of 2D echocardiography with a physical or pharmacological stress, which can determine how the heart muscles respond to stress and is mainly used to diagnose and evaluate coronary artery disease. The S9 Expert's stress echo package comes fully integrated and easily programmable interface that can be customized to fit your needs in order to help deliver a streamlined workflow for wall motion scoring and reporting.

- **High Density Probe**

S9 Expert is equipped with high density phased array probe to meet the needs of both high frame rate and premium resolution in the cardiac imaging. Thanks to the high sensitivity of Sonoscape's color Doppler mapping, the S9 Expert provides accurate cardiac diagnosis beyond your imagination.



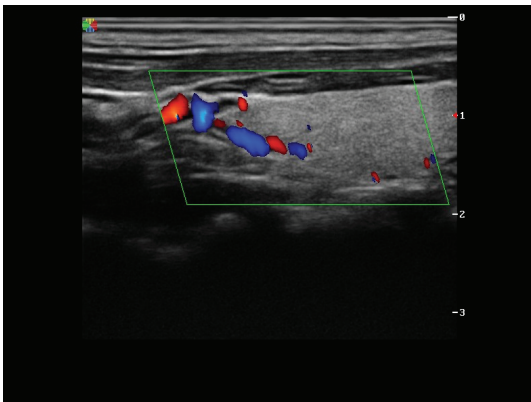
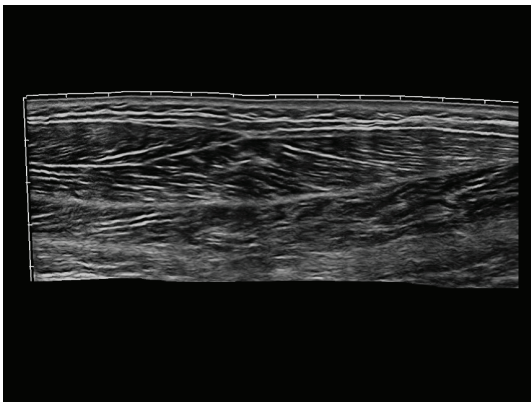
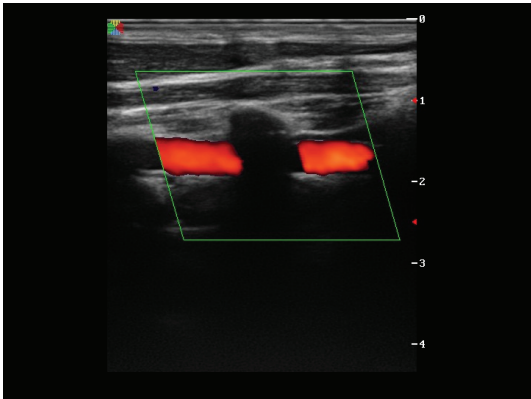
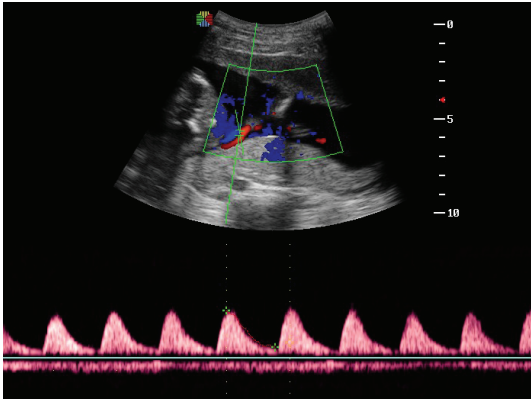
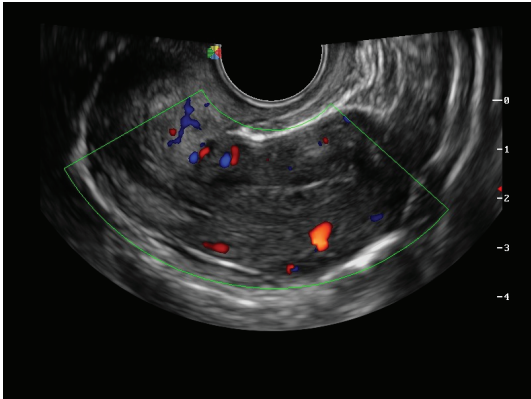
Premium Solutions Anywhere

S9 Expert, successfully blends sensible ergonomics, exquisite styling and ease of use, bringing the clinical benefits of a Premium system to new areas of healthcare.

- Frequently used controls are well located within an intuitive interface, making all operations both easy and accurate.
- 50 degree foldable high resolution color LCD screen guarantees the most comfortable viewing positions available in any environment.
- Its compact size together with an internal battery enables you to take control whenever a fast, accurate response is needed.



- 50 degree foldable 15" LCD display
- 140 degree opening angle, abundant connection interface
- Height adjustable stylish trolley
- Premium hard shell flight case



Superior Imaging Quality