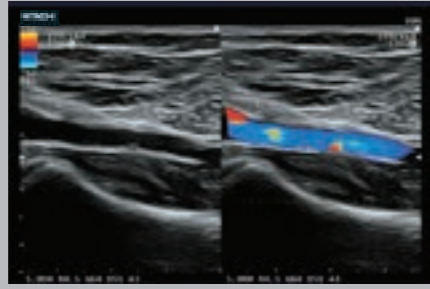


Image Gallery

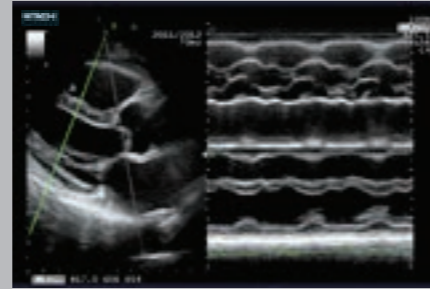
High quality imaging across a broad clinical range that includes abdominal, cardiac, and vascular applications.



eFLOW



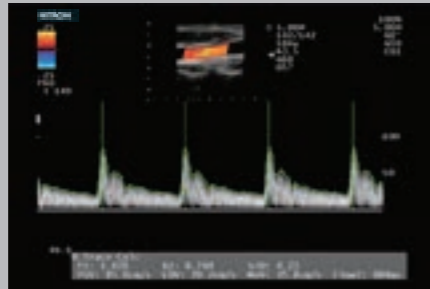
Dual CF



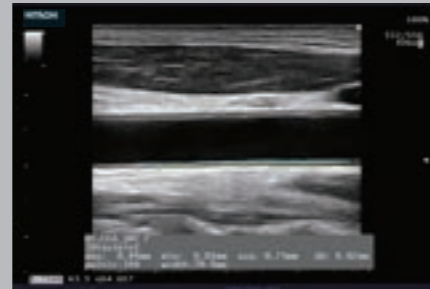
Free Angular M-mode (FAM)*



Trapezoidal Scanning



Doppler Auto Trace



Automated IMT Measurement

*Options

HITACHI

Inspire the Next

ARIETTA 50



- ARIETTA is a registered trademark or trademark of Hitachi, Ltd. in Japan and other countries
- Specifications and appearance may be subject to change for improvement without notice
- For proper use of the system, be sure to read the operating manual prior to placing it into service

Manufactured and distributed by

 **Hitachi, Ltd., Japan**

2-16-1, Higashi-Ueno, Taito-ku, Tokyo, 110-001, Japan

Distributor for Europe

 **Hitachi Medical Systems Europe Holding AG, Switzerland**

<http://www.hitachi-medical-systems.com>

2019-01-2.5K-(H) EU-Version/EN, 02/2019

The Next Level in Usability

This entry model of the ARIETTA series provides easy operation for beginners and experts. Its large 21.5 inch monitor and intuitive, user-friendly operability will bring you to the "Next Level".



Carefree
Workflow



Clear
Imaging



21.5 inch
Widescreen Monitor

This high contrast LCD monitor with a wide field of view displays images with high sensitivity and resolution, reducing patient-dependent image variability.



Palm Rest

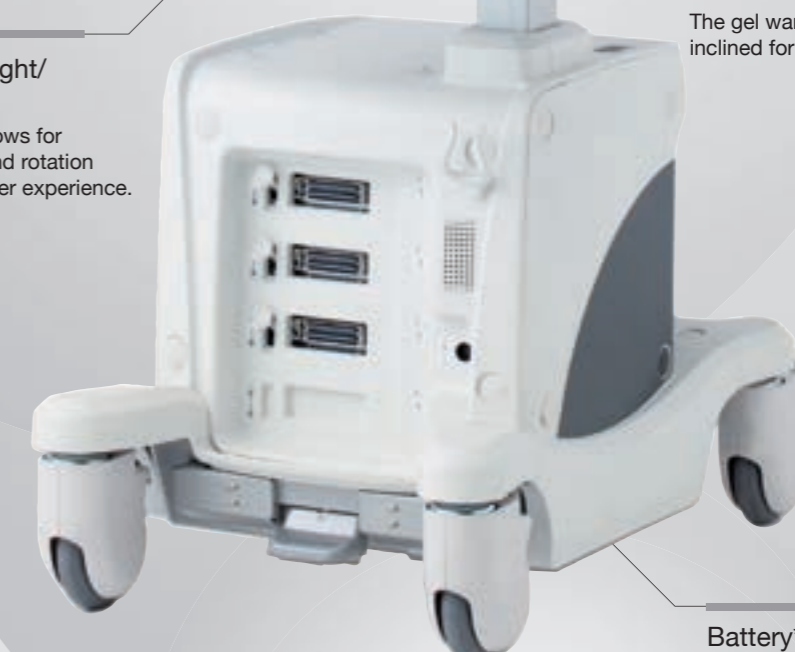
Easy-to-use
Touch Screen Panel

The touch screen panel is mounted at a comfortable and convenient angle. The screen's layout is customizable by clinical application, allowing for intuitive operation.



Gel Warmer*

The gel warmer is conveniently inclined for easy access.



Adjustable Panel Height/
Rotation

The operating console allows for easy height adjustment and rotation to boost a comfortable user experience.

Battery*

The battery operation allows the system to be moved to a different location without powering it down, so that operation can be resumed immediately.

Clean
Application



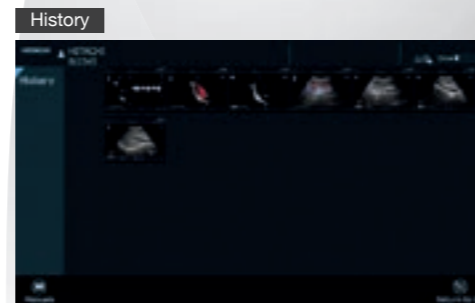
Simplified Operating Console

Clean keyboard design, offering an easy and pleasant user experience.



User-friendly Interface

The simple user interface features intuitive navigation and system operability.



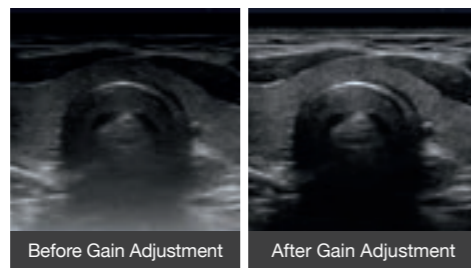
Easy retrieval of patient settings

The systems offers an easy retrieval of previously applied patient settings, invaluable for follow-up comparisons and repetitive examinations.



Silky Image Processing (SIP)

This adaptive image filter has further evolved to reduce speckles and boost edge enhancement, generating clearer images for easier interpretation.



Auto Optimizer

Images can be adjusted with a single keystroke: B-mode gain, baseline position and velocity range of the Doppler waveform are all optimized.